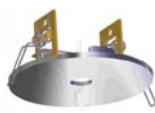


Mounting Options

Recessed Round—3” Recessed Fixtures & Housings



#5105
Aimable Bullet



#5051
Aurora



#5106
Regressed Baffle



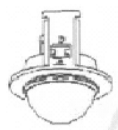
#5050
Retrofit Adapter



#7601
Glass & Shade
Canopy



#7501
Universal Canopy



#5131
Mini Glass Holder



#5031
Maxi Glass
Holder

More styles and specifications are available in the price sheet.

Description: Low voltage, aimable recessed fixtures available in a variety of styles, finishes and colors. Pre-construction, retrofit type cans and trim options are available. Depending on choice of fixture, can be used with glass/shade options or with our line of UniLight fixtures. Surface Mount Can for 3” is available.

Available Finishes: Penny -01, Nickel -02, Brass -03, White -04, Black -05, and Matte Nickel -08

Available Sizes: 3” can also be used in larger size housings by using trim rings for 4”, 5”, or 6” holes. Actual outside dimensions of 3” is 3 7/8”

Requirements: Depends on type of installation—universal connectors may be needed for canopies. Housing options are shown at right. Most use MR16 bulbs. Retro kits are available.
ALL GLASS/SHADES SOLD SEPARATELY.



MR16 Bulb available in variety of wattages, degrees & colors.



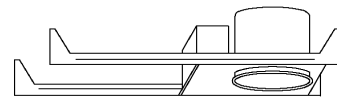
#5131 Mini Glass



#5051 Aurora



#5031 Maxi Glass



3” Recessed Housing—New Construction, non-insulated ceiling, remote transformer.



3” Recessed Housing—New Construction, Non-insulated ceiling. 50W transformer.



3” Recessed Housing—New Construction, Insulated Ceiling. 50W transformer.



3” Recessed Housing—Remodel/Retro. 50W transformer.